



# USER MANUAL

## HOW TO USE THE ADVANCED OPTIONS

V.1.7.0



**Introduction ..... 3**

**Option window ..... 4**

**General options..... 5**

**Devices options ..... 6**

**Audio options..... 8**

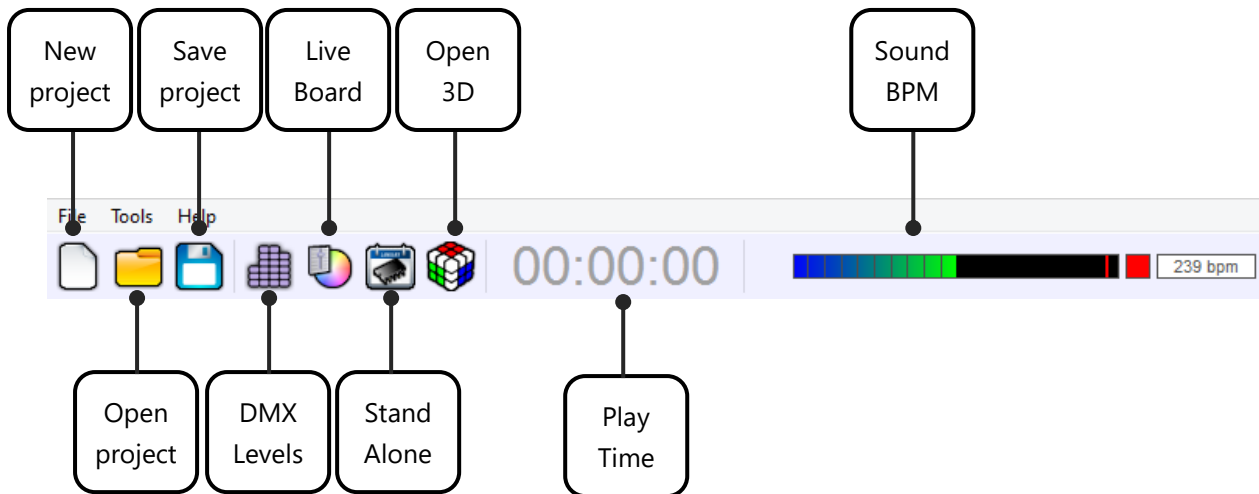
**Artnet options ..... 9**

**Network options..... 10**

**The Live Board page options ..... 11**

## INTRODUCTION

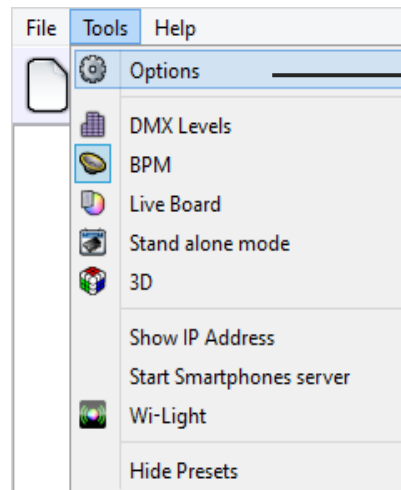
This chapter describes how to use the software's Advanced Options. They allow users to configure the software according to their needs and convenience. The main advanced options are in the tool ribbon located on top of the Editor window.



- **Create** a New project: The current project will be replaced by a blank one and the software will prompt you to save.
- **Open** an existing project; the software will prompt you to save your current project.
- **Save** the current project.
- **Display the DMX Levels** in real time; the DMX output window will appear and gives the current state of all the DMX outputs from the 4 DMX universes.
- **Switch to the Live Board** Mode to run the Live Board mode.
- **Switch to the Stand Alone mode** and program the memory of the hardware.
- **Displaying scenes and programs' time.**
- **Displaying the BPM calculator.** For display the Beat Auto calculator, use the chapter about audio option of this manual.
- **Open 3D** for go into the 3D real time simulation software.

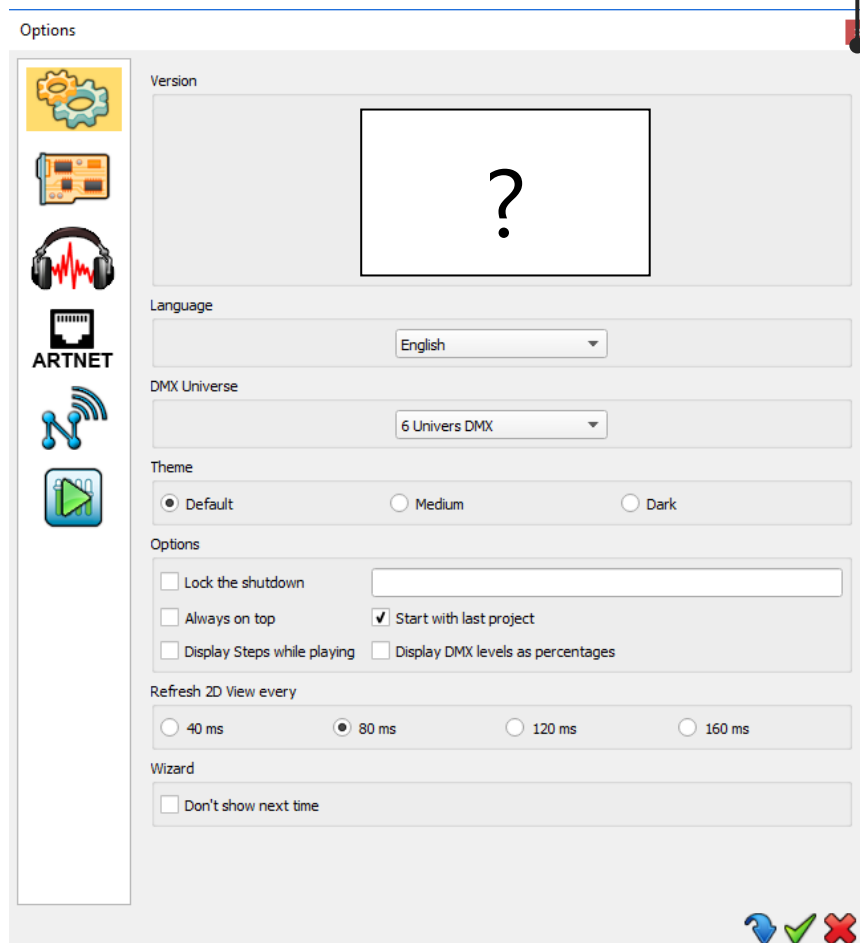
## OPTION WINDOW

The options window is available from the Tools menu of the Editor mode. Select the Options link to open the window.

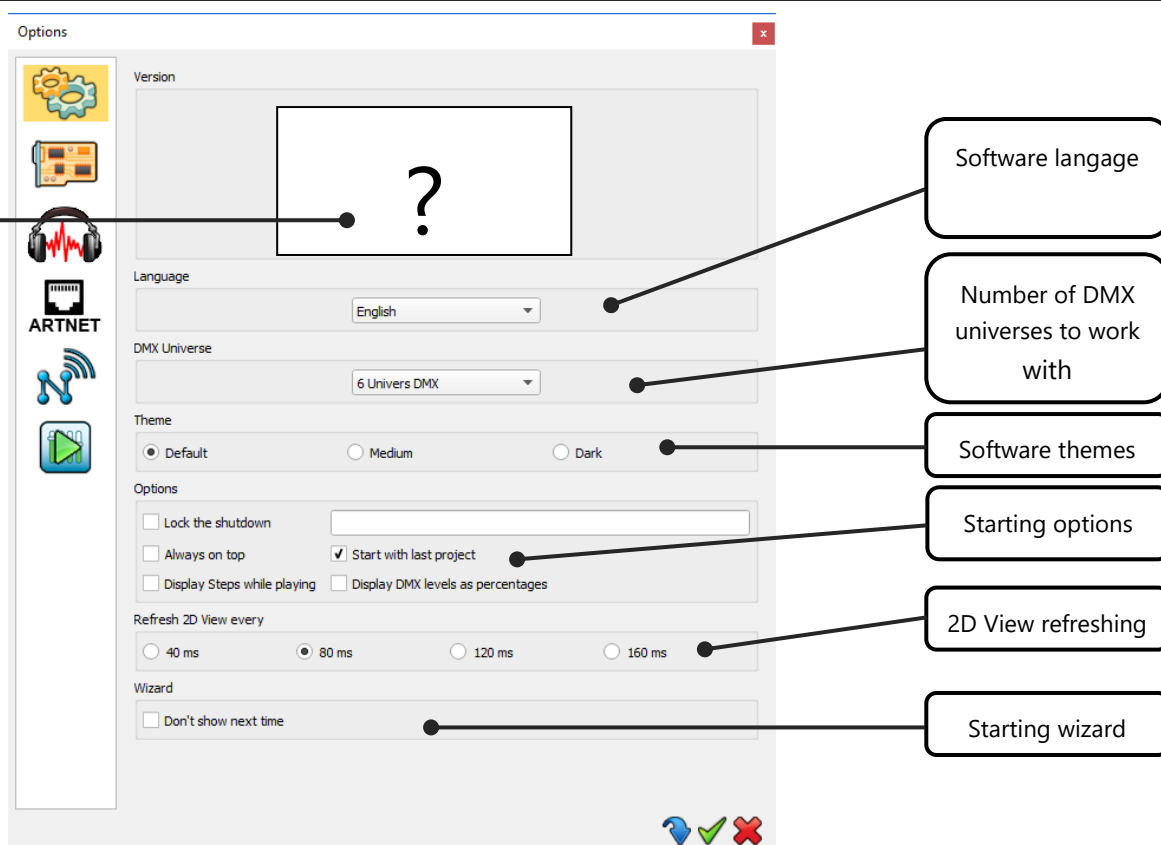


### Open the Advanced Option Window

You directly access to the general options. You can also configure; the Device options, the audio settings, the artnet and network options, as well as the Live Board mode.



## GENERAL OPTIONS



The General Options page shall impact the software's general display :

- **Version** of the software, to check if any updates are required.
- **Langages** available; English is set by default.
- **DMX Universe:** The software can manage up to 128 universes. To increase software performances, select only the number of DMX universes that you actually need.
- 3 **Themes** available.
- **Starting options:**
  - Lock the shutdown,** a password will be asked to be allowed to close and stop the software.
  - Always On Top:** This will display the Live Board mode as the main screen and over all the other applications that are running on your computer. It makes the Live Board the main display application and you will not be able to switch to or display another application without deselecting the option.
  - Start with last project:** Will automatically load the last project you were working on. This is a default option.
  - Display steps while playing:** In the editor mode, highlight the current playing step in the list while playing scene.
  - Display DMX level as percentage:** Show levels as percentages instead of absolute value: 0 is 0% 255 is 100%.
  - Refresh 2D view every...:** Refresh the 2D zone. Pick the higher value for the best performances.
- **Wizard, don't show next time:** Don't show anymore the splash wizard upcoming when you start the software.

## DEVICES OPTIONS

This page manages the electronics cards connected to your computer. It shows interfaces connected to the different USB ports of your computer. They are ordered by serial number going from the lowest to the highest serial number. The list contains devices names, DMX configurations and DMX universes assignments. *If the window of the connected devices remain empty, restart the software after having plug in the devices to your USB ports.*

The screenshot shows the 'Options' window with a sidebar on the left containing icons for settings, hardware, audio, ARNET, and network. The main area is divided into sections for 'Device #1', 'DMX', 'Firmware', 'Speed', and 'Network Config'. Callouts point to specific features:

- List of connected devices:** Points to the 'Device #1' header area.
- Device DMX lines configuration:** Points to the 'DMX A' and 'DMX B' dropdown menus.
- Device firmware Update:** Points to the 'Update Firmware' button.
- DMX Speed:** Points to the 'Break' and 'Period' dropdown menus.
- Wifi device network configuration:** Points to the 'Access Point' and 'Infrastructure' radio buttons.
- Get stand alone trigger:** Points to the 'Get Stand Alone triggers' checkbox.

At the bottom right, there are three status icons: a blue hand cursor, a green checkmark, and a red X.

**DMX :** Configures the XLR DMX lines of the Device. For each lines (DMX A – DMX B) you can :

- Define the communication mode: In or Out (depending on if the interface allows it or not)
- Assign a DMX universe. For example with 2 lines defined as 2 Outputs you can set the same universe on the 2 XLR and use your hardware like a DMX Splitter.

Click on the Apply button to confirm the new configuration.

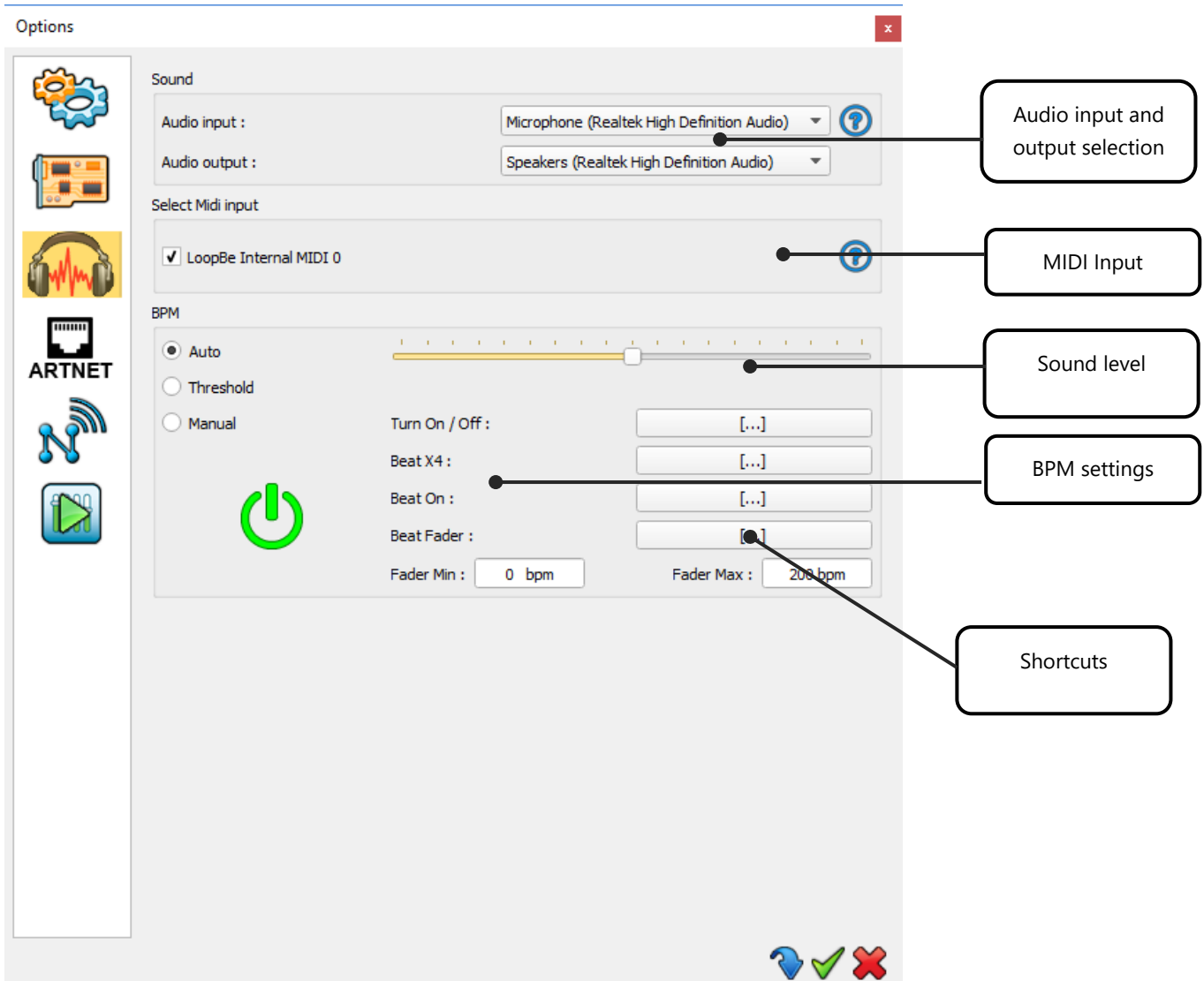
**Firmware :** Firmware version of the selected device. You can automatically update the Firmware. This process takes few minutes and you must never disconnect your device during the updating process or it will be damaged.

**Speed :** 4 values are available to configure the DMX signal parameters which will affect the speed of the DMX signal. Click Apply to confirm the speed and observe the result on the pilot LED of the interface. Speed settings are important if some of your lightings equipment are incompatible. Lowering the speed may solve the problem but in our experience, the problem usually comes from a cable, a connection or a fixture.

**Network config :** Configure the Wifi interfaces, select between the Access point and the Infrastructure mode and edit connections settings. Please refer to the WIFI interface Datasheet to be able to configure the communication.

**Get stand alone trigger :** Allows the triggers action of the interface to be use by the software directly and effective in the software Live Board mode.

## AUDIO OPTIONS



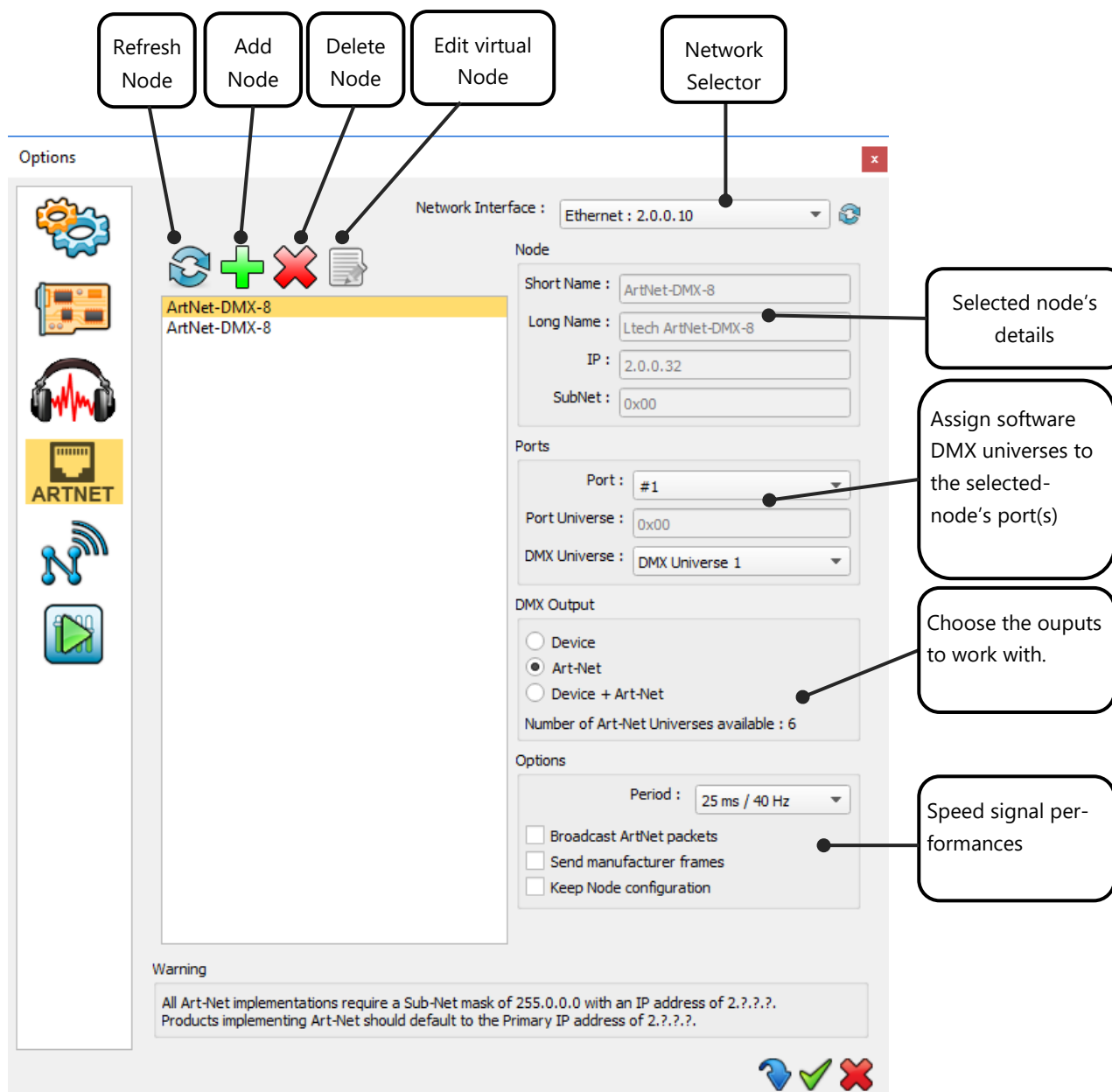
**MIDI:** Select a MIDI Input activate midi notes and midi control commands.

### BPM

- **Audio Input:** Select one of the available audio input for the beat detection. If you play music from the computer, you must select your audio device as audio input. To do this please check the local Help by clicking the help button right to the audio input selector.
- **Sound Level:** Adjust sound level to get analysed.
- **Auto:** Automatic beat detection algorithm
- **Treshold:** Automatic beat detection algorithm with adjustable level thresholds
- **Manual:** Set a manual BPM by taping 4 times the BPM button.
- **Shortcuts:** Choose keyboard shortcuts to control the bpm commands.

**TIPS:** The Audio Mode selected (Auto, Treshold, or Manual), display the corresponding beats detection bar in the Editor Mode, as well as in the Live Board Mode.





- **Refresh node** : auto-detect connected Artnet devices on the network.
- **Node** : show node name and Ethernet details.
- **Port** : assign the software's universes to the node device ports. (one node get handle 1 to 4 DMX universes)
- **Dmx output** : Choose to work with Artnet or DMX interface or both of them. Choosing the only items you need to work with can improve software's performances.
- **Options** : Adjust the communication speed. Can solve some communication problems depending on the manufacturers.
- **Broadcast Artnet packets** : Check and Broadcast the Artnet paquet on all the network.
- **Keep node configuration** : Keep nodes displayed and effective even if they are disconnected.

## NETWORK OPTIONS

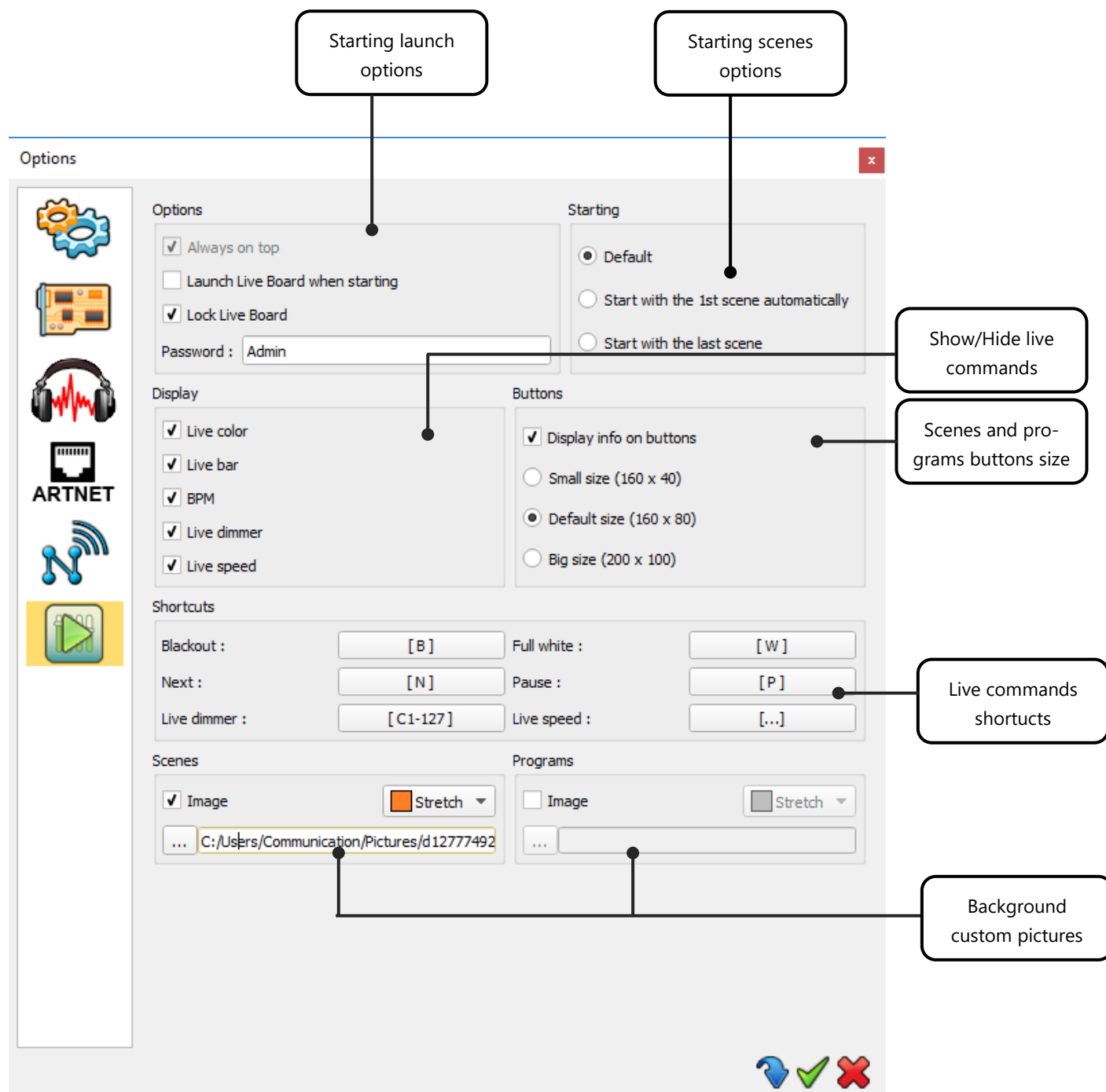
The screenshot shows the 'Options' window with a sidebar on the left containing icons for settings, hardware, audio, network, and video. The main area is divided into four sections:

- Devices:** Network Interface: Auto. A callout points to the 'Wifi interfaces network'.
- Art-Net:** Network Interface: Ethernet : 2.0.0.10. A callout points to the 'Artnet network'.
- 3D:** Network Interface: Localhost : 127.0.0.1. A callout points to the '3D network'.
- Start Smartphones server:** Network Interface: Ethernet : 2.0.0.10. A callout points to the 'Smartphones and tablets network'. Below this, there are three radio buttons: 'Start Smartphones server manually' (selected), 'Start Smartphones server at opening', and 'Start Smartphones server at Live Board opening'. A callout points to the 'Stop Smartphones server' button and explains: 'To use the smartphones remote app you must turn on the smartphone server'.

At the bottom right, there are three icons: a blue arrow, a green checkmark, and a red X.

## THE LIVE BOARD PAGE OPTIONS

The software allows to customize the Live Board Mode commands according to your needs. Moreover, you can also make the Live Board Mode the only functionality of the software possible to access; useful if you ask someone to take over the show and want to avoid any accidental settings changes.



### Options:

- **Always On Top:** This will display the Live Board mode as the main screen and over all the other applications that are running on your computer. It makes the Live Board the main display application and you will not be able to switch to or display another application without deselecting the option.
- **Launch Live Board When Starting:** This displays the Live Board directly when you open and load the software. The user won't be able to access the Editor mode and will be able to trigger its programs.
- **Lock Live Board:** select this to secure your show and all the scenes that you have programmed. In this mode the user cannot access the Editor mode unless he knows the password to unlock the software. Activate and enter your password to protect the system. If you have forgotten your password you can cancel this option with the key combination CTRL + click on Exit Live Board.

### Starting :

- **Start the Live Board as Default:** scenes will not be automatically triggered when the user switches to the Live Board.
- **Start With The 1<sup>st</sup> Scene Automatically:** when the user switches to or opens the Live Board the first program of the list will automatically play. This option, combined with the Launch Live Board When Starting is a great solution to automatically start and play the show with a simple double click on the application.
- **Start With The Last Scene:** the software will remember the last scene played before the software was closed and the software will start up the same program when you open the Live Board software.

### Display options:

- Show/Hide the Live Color Palette.
- Show/Hide the Live Toolbar with the Black Out, Full White, Next Scene and Pause options.
- Show/Hide Audio – BMP module
- Show/Hide the Live Dimmer cursor.
- Show/Hide the Live general Speed cursor.

### Buttons options:

Customize the buttons size to optimize the space of your liveboard window.

### Shortcuts options:

Assign shortcuts to the live board main commands. It can be keyboard key, DMX input channel or MIDI Note/Control.

### Scenes/Programs images options:

Define custom backgrounds for both scenes and programs window area.